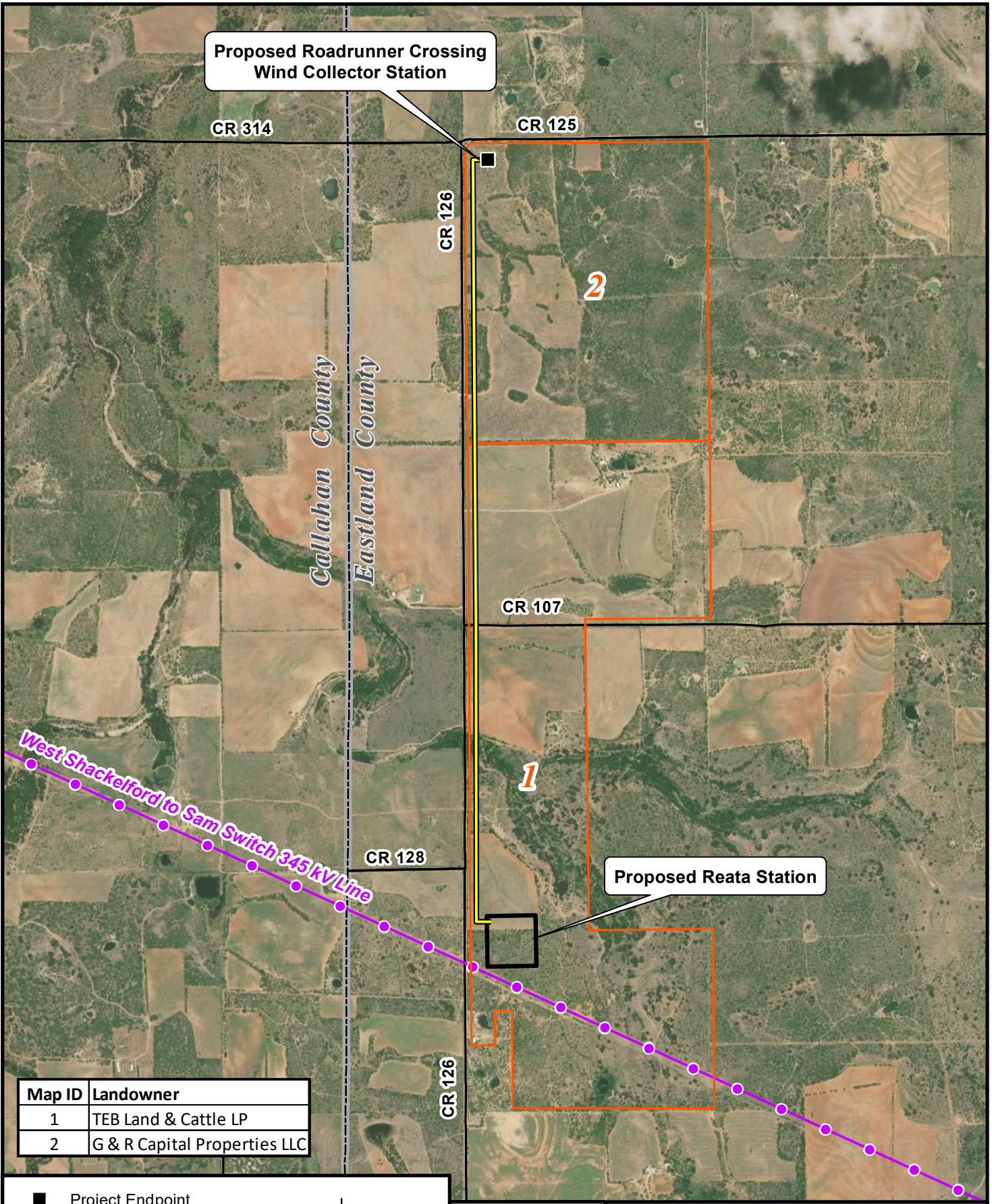



Path: \\dalsrv\data\Projects\ESP\ONE STAR TRANSMISSION\Roadrunner 345kV\Geospatial\DataFiles\ArcDocs\RX2RS_Directly_Affected.mxd gacox 5/21/2020

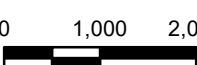


Map ID	Landowner
1	TEB Land & Cattle LP
2	G & R Capital Properties LLC

- Project Endpoint
- Consensus Route
- Property Boundary
- Existing Transmission Line
- County Boundary
- County Road



0 1,000 2,000



1 inch = 1600 feet




Directly Affected Landowners
 Reata Station to Roadrunner Crossing Wind
 345 kV Transmission Line
 Lone Star Transmission
 Eastland County, Texas